

## BIM Demystified: How to Make BIM an Every-team tool

[ Article originally appeared on  
Autodesk Construction Cloud Blog.  
[constructionblog.autodesk.com](https://constructionblog.autodesk.com) ]

By Kyle Seyler,

BIM. For construction folks who work a lot with architecture and engineering firms, seeing these three letters is kind of like greeting a familiar friend. Building information modeling (BIM) technology is widely used when planning and visualizing projects, so many modern architects, designers, and VDC professionals are well-versed in the technology.

But outside the design world, and even within, BIM can carry a reputation where it's often seen as a highly technical series of tools and processes involving 3D, 4D, 5D, and even 6D. Unfortunately, this perception can hinder its growth outside of the office.

But what many don't know is that BIM does not have to be as complicated as they perceive. At its core, it can be as simple as sharing a model between the VDC department and the field.

### The business case for empowering BIM access in the field

When models are flattened to PDF documents and distributed at the jobsite, a good amount of rich BIM data gets lost during the building phase of the project. Today, for instance, design firms draw to meet city and Authority Having Jurisdiction (AHJ) requirements. This means information is often missing. This could include one pipe or duct to signify design intent where there might be multiple pipe or conduits on a rack that need to fit into that space. With simple 2D and design intent drawings, it's like having half of the instructions to assemble something.

"Placing the model in the hands of installers is the goal. Midway through construction, we only see a partially installed condition," says Joshua Mercado, Director, BIM and Technology Integration at The Boldt Company "Field leads will still run into issues in the field based on a multitude of variables, including tolerance. To suggest a satisfactory alternative to a variance in the field, field leads must understand the original intent. The model helps outline the original intent and answer the question – did we build what we intended to, and if not, how do we adjust?"

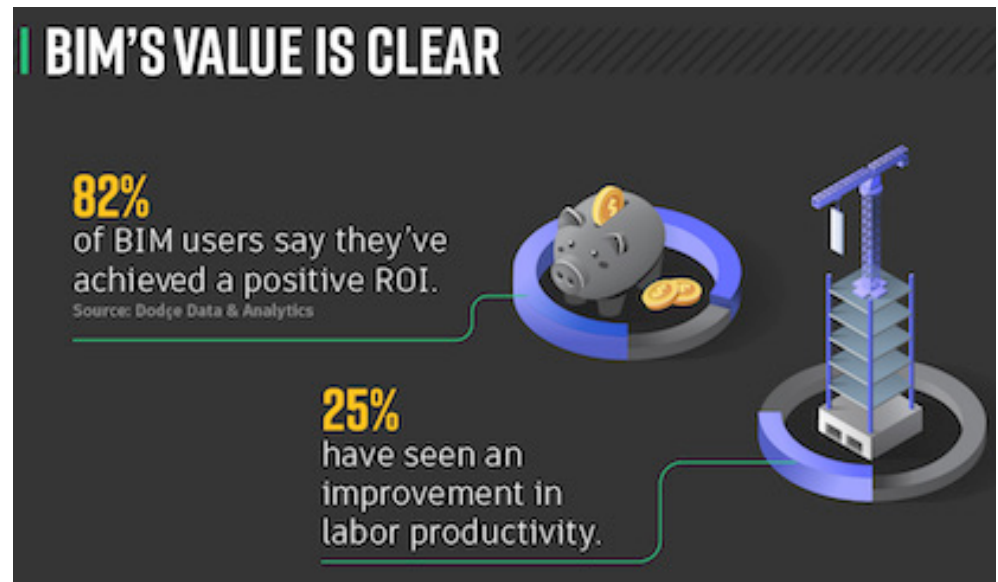


Photo by <https://constructionblog.autodesk.com>

While some firms have tried to solve these challenges using mobile BIM viewers, many of the apps in the market require complex setups and additional workforce training.

This creates a sizable gap between design and construction—which ultimately leads to poor communication and unnecessary trips between the trailer and the jobsite. It also leads to additional rework costs or time to field measure prior to ordering material. Industry data also shows that 60% of general contractors view lack of coordination and low-quality documentation as key contributors to decreased labor productivity.

A lot of team members in the field also waste too much time looking up project data or putting out fires. Research shows that 35% of construction professionals' time is spent on non-productive activities like searching for information, resolving conflict, and fixing mistakes.

Here's the good news: many of these problems can be fixed by keeping design and field folks aligned through BIM. When these teams can access the same information on a collaborative platform, communication improves, data visibility increases, accountability improves, and things get done faster.

Industry data supports this; 61% of construction professionals say that BIM processes reduced project error. Additionally, 82% of BIM users re-

port a positive return-on-investment.

All this to say that it's time to rethink the role of BIM, particularly on the construction site.

We need to recognize that BIM is not just a design tool; the technology can be used beyond the realm of design and VDC.

As Jeremy Thibodeau, AMER Leader, Construction Customer Success for Autodesk, puts it, "If you boil it down to its essence, BIM is a communication tool. The future of BIM involves using the model at all stages to improve collaboration."

### The benefits of BIM to the field

Expanding the use of BIM beyond design helps both field and office teams deliver high-quality work faster, which leads to favorable results. Consider the following benefits.

Streamlines communication. BIM enables design, coordination, and field professionals to easily communicate with each other. Since everyone is working from the same platform and model, teams can relay—and receive—accurate information faster.

Visit the link below for the full article:

<https://constructionblog.autodesk.com/demystifying-bim/>



# CALIFORNIA SUB-BID REQUEST ADS

## DESILVA GATES CONSTRUCTION

11555 Dublin Boulevard • P.O. Box 2909  
Dublin, CA 94568-2909

Phone: (925) 829-9220 / Fax: (925) 803-4263

Website: [www.desilvagates.com](http://www.desilvagates.com)

ESTIMATOR: JIM YACKLEY

An Equal Opportunity/ Affirmative Action Employer

DeSilva Gates Construction (DGC) is preparing a bid as a Prime Contractor for the project listed below:

**CALTRANS ROUTE 101 – CONSTRUCTION ON STATE HIGHWAY IN SAN MATEO COUNTY AT VARIOUS LOCATIONS FROM BROADWAY OVERCROSSING TO 0.2 MILE NORTH OF OYSTER POINT BOULEVARD OVERCROSSING.**

**Contract No. 04-3J0624**

**Federal Aid Project No. ACNH-Q101(388)E**

**Disadvantaged Business Enterprise (DBE)**

**Goal Assigned is 27%**

**OWNER: STATE OF CALIFORNIA**

**DEPARTMENT OF TRANSPORTATION**

**1727 30th Street, Bidder's Exchange, MS 26,**

**Sacramento, CA 95816**

**BID DATE: JUNE 21ST, 2022 @ 2:00 P.M.**

DGC is soliciting quotations from certified Disadvantaged Business Enterprises, for the following types of work and supplies/materials including but not limited to:

AC Dike, Barrier Rail Sub, Clearing and Grubbing/Demolition, Cold Plane, Construction Area Sign, Electrical, Emulsion supplier, Erosion Control, Lead Compliance Plan, Metal Beam Guardrail, Minor Concrete, Misc. Iron and Steel, Pavement Milling, PCC Paving, Roadside Signs, Striping, Survey/Staking, SWPPP Prep/ Water Pollution Control Plan Prepare, Temporary Erosion Control, Traffic Control Systems, Vegetation Control, Trucking, Water Trucks, Street Sweeping, Class 2 Aggregate Base Material, Hot Mix Asphalt (Type A) Material, Rubberized HMA (Open Grade) Material, Rubberized HMA (Gap Grade) Material, and Asphalt Binder,

Plans and specifications may be reviewed at our offices located at 11555 Dublin Boulevard, Dublin, CA and 3855 North Freeway Boulevard, Suite 100, Sacramento, CA or at your local Builders Exchange, or reviewed and downloaded from the dropbox site at [https://www.dropbox.com/sh/5rvc1bwfbasg19/AAABrd0ba51\\_kN3GtAESfBUoa?dl=0](https://www.dropbox.com/sh/5rvc1bwfbasg19/AAABrd0ba51_kN3GtAESfBUoa?dl=0)

or from the Owner's site at [http://www.dot.ca.gov/hq/esc/oe/weekly\\_ads/all\\_adv\\_projects.php](http://www.dot.ca.gov/hq/esc/oe/weekly_ads/all_adv_projects.php)

Fax your bid to (925) 803-4263 to the attention of Estimator Jim Yackley. If you have questions for the Estimator, call at (925) 829-9220. When submitting any public works bid please include your DUNS number and DIR number. For questions regarding registration for DIR use the link at [www.dir.ca.gov/Public-Works/Public-Works.html](http://www.dir.ca.gov/Public-Works/Public-Works.html)

If you need DBE support services and assistance in obtaining bonding, lines of credit, insurance, necessary equipment, materials and/or supplies or related assistance or services, for this project call the Estimator at (925) 829-9220, or contact your local Small Business Development Center Network (<http://californiasbdc.org>) or contact the California Southwest Transportation Resource Center ([www.transportation.gov/osdbu/SBTRCs](http://www.transportation.gov/osdbu/SBTRCs)). DGC is willing to breakout portions of work to increase the expectation of meeting the DBE goal.

At our discretion, 100% Payment and 100% Performance bonds may be required as a subcontract condition. This will be a PREVAILING WAGE JOB. DGC is an Equal Opportunity/Affirmative Action Employer.

## AECOM

300 S. Grand Avenue, 10th Floor • Los Angeles, CA, USA 90071 • T 1-213-593-8100

### REQUEST FOR CBE SUBCONSULTANT INTEREST

AECOM is bidding on the following project as Prime Contractor:

**Owner: County of Los Angeles**

**Request for Proposal No. BRC0000335**

**On-Call Geotechnical and Related Services**

**Proposal due date: Wednesday, June 15, 2022**

AECOM is seeking qualifications from Community Business Enterprise (CBE) companies for the following supporting services:

- Driller: perform geotechnical boring, sampling, monitoring well installation, downhole logging support, and associated services
- Geotechnical Laboratory: perform in-house geotechnical laboratory testing services on soil and aggregate samples
- Environmental Laboratory: perform in-house environmental testing services
- Traffic Control Service: provide traffic control service and traffic control plan preparation
- Geophysical Survey: perform subsurface survey using geophysical instruments

Experience providing similar services on On-Call Geotechnical and Related Services for the County of Los Angeles is preferred. This Proposal is in alignment with the County of Los Angeles CBE Program requirements and certified CBEs are encouraged to respond. The bid may be downloaded from the LA County website:

<https://camisvr.co.la.ca.us/LACoBids/BidLookUp/OpenBidList>

Interested businesses should email a brief firm overview, List of County of Los Angeles or similar experience, and CBE certifications and documentation by **June 10, 2022**, to James Gormley at [James.gormley@aecom.com](mailto:James.gormley@aecom.com).

Assistance is available in obtaining any necessary bonding; lines of credit or insurance; information related to the requirements for the work; and necessary equipment, supplies materials, or related services.

### CAHILL CONTRACTORS LLC requests bids from Certified SBE / San Francisco LBE Subcontractors and Suppliers for the following trades:

Earthwork & Site Demolition/  
Misc. Metals/Sealants & Caulking/  
Painting/Asphalt Paving & Striping/  
Site Concrete/ Landscape,  
Irrigation & Site Furnishings/  
Site Utilities/  
Lighting & Security Cameras

**BALBOA PARK BART PLAZA – GMP  
401 Geneva Ave.,  
San Francisco, CA 94112**

This is a San Francisco project with construction workforce, prevailing wage, and local hiring requirements.

**BID DATE: 6/23/22 @ 2:00 p.m.**

#### BID DOCUMENTS:

Please contact Wendy for access to documents on BuildingConnected.

**CONTACT:** Wendy Kirton at [estimating@cahill-sf.com](mailto:estimating@cahill-sf.com), (415) 677-0611.

## SBE OUTREACH SERVICES

With 1.5 million businesses in our database, SBE is California's #1 source for diversity outreach.

#### Advertisements

Placed in the Small Business Exchange newspaper, SBE Today newsletter, and online at [www.sbeinc.com](http://www.sbeinc.com)

#### Faxed and Eblast Solicitations

Targeted mailings sent to businesses per your criteria.

#### Telemarketing

Telephone follow-up calls that follow a script of 5 questions you create.

#### Computer Generated Reports

Will fit right into your proposal, along with a list of interested firms to contact.

#### Contact Info:

1160 Battery Street East, Suites #100

San Francisco, CA 94111

Email: [sbe@sbeinc.com](mailto:sbe@sbeinc.com)

Website: [www.sbeinc.com](http://www.sbeinc.com)

Phone: (415) 778-6250, (800) 800-8534

Fax: (415) 778-6255

#### Publisher of

Small Business Exchange  
weekly newspaper

1984

38  
Years

2022



# CALIFORNIA SUB-BID REQUEST ADS



Is requesting quotes from certified and qualified **DBE** Subcontractors, Suppliers, and Service Providers for the following (but not limited to) work:

**SUBS/SERVICE PROVIDERS**

Asphalt Concrete, Clearing & Grubbing, Concrete Barrier (Permanent), Construction Area Signs, Corrugated Metal Pipe (CMP), Develop Water Supply, Erosion Control, Ground Anchor, Hydroseding, Metal Beam Guard Railing, Misc Iron & Steel Frame, Cover, and Grate, Paving Asphalt (Asphalt Concrete), Place Asphalt Concrete Dike & Misc., Reinforced Concrete Pipe, Remove Concrete, Rock Slope Protection (RSP), SWPPP Planning, Temporary Erosion Control, Traffic Control System, Traffic Flagger

**SUPPLIERS**

Asphalt Supplier (Bulk Item), Concrete & Cement Supplier (Bulk Item), Pipe Supplier, Sand & Gravel Supplier (Bulk Item),

**FOR CONSTRUCTION ON STATE HIGHWAY IN LOS ANGELES COUNTY IN SANTA CLARITA FROM 0.9 MILE NORTH OF PLACERITA CANYON ROAD UNDERCROSSING TO 0.2 MILE SOUTH OF GOLDEN VALLEY ROAD OVERCROSSING Caltrans Contract No. 07-339604 DBE GOAL 26%**

**BID DATE: June 15, 2022 at 2:00 p.m.**

All Quotes Due Prior

**Sukut Construction, LLC**

4010 W. Chandler Avenue, Santa Ana, CA 92704

Contact: Lawrence Damore

Phone: (714) 540-5351 • Fax: (714) 545-2003 • Email: [estimating@sukut.com](mailto:estimating@sukut.com)

Plans/specs are available for viewing at our office by appointment, by Sukut FTP, or from Owner. Subcontractors must be prepared to furnish 100% performance and payment bonds and possess current insurance and workers' comp coverage. Sukut will assist qualified subcontractors in obtaining bonds, insurance, and/or lines of credit. Subcontractors/Vendors will be required to sign Sukut's Standard Subcontract/Purchase Order. Copies are available for examination. Please contact Lawrence Damore at Sukut Construction for assistance in responding to this solicitation.

Sukut Construction's listing of a Subcontractor in its bid to the agency is not to be construed as an acceptance of all the Subcontractor's conditions or exceptions included with Subcontractor's price quotes. Quotations must be valid for the same duration as specified by Owner for contract award.

**Sukut Construction, LLC** An Equal Opportunity Employer



**SYBLON REID**  
General Engineering Contractors  
Providing Solutions to Difficult Projects

P.O. BOX 100 Folsom, CA 95763

Phone: (916) 351-0457 Fax: (916) 351-1674

Contact: John Pottenburgh

Email: [johnp@srco.com](mailto:johnp@srco.com) & [estimating@srco.com](mailto:estimating@srco.com)

Sub-Bids Requested From **MBE & WBE** Subcontractors & Suppliers for:

**OWNER: EAST BAY MUNICIPAL UTILITY DISTRICT  
PARDEE RECREATION AREA AND PARDEE CENTER WATER TREATMENT PLANT IMPROVEMENTS  
SPECIFICATION NO. 2165**

**LOCATION: VALLEY SPRINGS, CA**

**BID DATE: JUNE 8, 2022 @ 1:30 PM**

**Trades Solicited:** Aggregates Supply, Construction Materials Supply, Environmental Materials Supply, Pipe/Valve/Fittings Supply, Concrete Supply, Trucking, Electrical Sub, Painting Sub, Saw Cutting Sub, Surveying Sub, Testing/Inspection Sub.

If a portion of the work is too large for you to handle, contact us and we will try and break it into smaller portions.

Subcontractors and suppliers must be licensed to conduct business in the state of California. Must be able to provide payment and performance bonds provided by approved surety company. SRC will pay bond premium up to 1.5% of subcontract amount and will assist with insurance compliance. SRC will work with subcontractors on joint check agreements. Plans and specs are available for viewing at our Folsom office and upon request will provide FTP site for electronic viewing of project.

Bonding, insurance, lines of credit and any technical assistance or information related to the plans or specifications for the work will be made available. Assistance with obtaining necessary equipment, supplies, materials, or related assistance or services for this project will also be offered.

## Four Ways 5G Will Transform Construction Worksites

[ Article originally appeared on [www.constructionexec.com](http://www.constructionexec.com) ]

By **Burcin Kaplanoglu**,

5G is generating buzz across industries, and construction is no exception. The technology has the potential to unlock new levels of productivity and visibility on worksites that haven't previously been possible. For example, 5G will make construction professionals more efficient by enabling a better way to transmit and share information—including video and sensor data—quickly.

### What is 5G?

Simply put, 5G is the fifth and latest iteration of wireless networking technology, or broadband. The G stands for generation, and each generation has brought increased speed, reliability and accessibility. 5G promises to enable dramatically higher bandwidth and speeds, negligible latency and increased capacity. It is set to boost speeds 10 to 100 times faster than current long-term evolution (LTE) networks, offer extremely low latency (as little as one to 10 milliseconds) and support a far higher number of devices in a given area compared with LTE. 5G technology is also expected to offer the most reliable network availability to date and a 90% reduction in network energy consumption.

From the construction industry's standpoint, 5G is positioned to revolutionize how contractors deliver projects by tackling a key challenge to digital transformation: worksite connectivity. 5G can help better enable the collection, capture and analysis of crucial onsite, real-time data to monitor the health, location, status and specifications of various assets.

### Providing high bandwidth

Construction businesses work with very large data sets for richer visualization and multi-dimensional data sets, such as with building information models, image/reality capture, 4D, 5D and laser scanning. Add in new technologies such as virtual and augmented reality (AR) and faster broadband will become increasingly important.

The high bandwidth of 5G is expected to provide 10 to 100 times faster speeds (1 gigabit in the air), compared with existing LTE networks, which should also mean equivalent increases in capacity. This could give construction professionals nearly instantaneous access to data-intensive edge and cloud applications, enabling multiple users to interact with each other in real time from anywhere in the world. Not only will this help foster interactions between





# CALIFORNIA SUB-BID REQUEST ADS



## Kiewit Infrastructure West Co.

4650 Business Center Drive • Fairfield, CA 94534  
Attn: Amanda Schroeder at [norcal.bids@kiewit.com](mailto:norcal.bids@kiewit.com)  
Phone (707) 439-7300 • Fax (707) 439-7301

Requests quotes from qualified Subcontractors, Service Providers, Consultants, and/or Suppliers seeking to participate for the following project in Sunnyvale, CA:

### SCWP – Secondary Treatment and Dewatering Project

Public Works Project No. UY-21-07

Owner: City of Sunnyvale

**Bid Date: June 29, 2022 @ 3:00 PM**

**Subcontractor and Supplier Scopes are due June 22, 2022  
and Quotes NO LATER THAN June 28, 2022 at 5 PM.**

Kiewit requests Disadvantaged Business Enterprise (DBE), Minority Business Enterprise (MBE), Women Business Enterprise (WBE), Small Business Enterprise (SBE), Small Business in a Rural Area (SBRA), Labor Surplus Area Firm (LSAF), or Historically Underutilized Business (HUB) Zone Businesses for the following scopes, but not limited to:

Asphalt Paving • Acoustical Ceilings and Wall Panel • Aggregates • Architectural Woodwork • Auger Cast Piles • Bird Deterrent Devices • Building Furnishing • Building Insulation • Building Interior • Specialties Building Safety & Fire Protection • Cast-in-Place Concrete • Cathodic Protection • Cellular Concrete • Ceramic Tile • Concrete Formwork • Concrete Pumping • Concrete Supply • Crane & Hoists • Dewatering • Doors • Earthwork • Epoxy Injection System • Erosion Control • Expansion Joint • Fiberglass Reinforced Plastic • Fire Suppression • Flashing & Sheet Metal • Flooring • Framing & Gypsum Board Hatches • HVAC • Installation of Truck Scale • Joint Sealants • Masonry • Mechanical Equipment • Metal Roofing • Minor Concrete • Misc. Metals & Structural Steel • Overhead Coiling Doors • Painting & Coating • Pipe & Valve Supply • Potholing • Precast Concrete • Precast Utility Structures • Pre-Fabricated Metal Building & Canopy • Quality Control • Rebar • Shoring • Signage • Skylights • Steel Decking • Striping • Subsurface Utility Exploration/Engineering • Tanks (FRP) • Tanks (Vertical Post-Tensioned) • TPO Roofing • Traffic Control • Trucking • Waterproofing/Dampproofing • Windows & Glazing

Certified thru, but not limited to, any of the following agencies:

[www.mbd.gov](http://www.mbd.gov) ; [www.epa.gov](http://www.epa.gov) ; [www.sba.gov](http://www.sba.gov) ; [dot.ca.gov](http://dot.ca.gov)

Non-DBE firms are encouraged to contract with a group of lower tier DBEs or individual DBEs.

Plans are available for viewing through SmartBidNet (SBN). All companies already registered in our SBN database will receive an invitation to bid. Please email [norcal.bids@kiewit.com](mailto:norcal.bids@kiewit.com) to have your company added to our SBN database to be able to receive bidding information, Plans and Specifications.

Performance and Payment Bonds may be required for Subcontractors, and Supply Bond for permanent material Suppliers on this project. Bond requirement can be waived on a case-by-case basis. Please contact Kiewit for more information. Bond premiums are reimbursable by Kiewit. Please contact Kiewit for any assistance in bonding, insurance, equipment, materials and/or supplies.

Subcontractors must possess & provide current California contractor's license number & DIR Registration number.

Clean Water State Revolving Fund (CWSRF) requirements  
US Environmental Protection Agency (WIFIA) grant requirements  
American Iron and Steel (AIS) requirements  
Davis-Bacon Act and California prevailing wage requirements  
Disadvantaged Business Enterprises (40 CFR Part 33) requirements

An Equal Opportunity Employer  
CA Lic. 433176  
DIR #: 1000001147



Request for Quotes from Subcontractors & Business Enterprise Subcontractors  
Certified as MBE, WBE, OBE, SBE, LBE, and DVBE Firms

**Project: Administration Building and Jail Demolition & Redevelopment Project**

**Owner: Contra Costa County Public Works Dept. – Capital Projects**

**Work Packages: Waterproofing, Roofing, and Pedestal Pavers**

**Location: Martinez, CA**

**Bid Due Date: June 16th, 2022 Bid Time: 3:59 PM (PST)**

Webcor Builders is currently requesting bid proposals for the Contra Costa County Administration Building and Jail Demolition & Redevelopment Project to act as a Subcontractor for the listed Work Packages. Business Enterprise subcontractors and material suppliers must be a business enterprise certified as a MBE, WBE, OBE, SBE, LBE, and DVBE Firm in order to qualify for the contract's business enterprise participation goals on this project. Bid or material quotes are due no later than June 16th, 2022, at 3:59 PM.

Work packages:

#### 1. Waterproofing, Roofing, and Pedestal Pavers

The project plans and specifications may be found online at Webcor's BuildingConnected Website. Interested Subcontractors please contact Samantha Dumlalig via email at [sdumlalig@webcor.com](mailto:sdumlalig@webcor.com) or by phone at (510) 590-6568. 100% Payment and Performance Bonds may be required, and insurance will be required for this project. Assistance is available. Please contact Samantha Dumlalig regarding assistance with these requirements.

Estimated construction start of these Packages: see Exhibit H on Building Connected

Estimated completion of these packages: see Exhibit H on Building Connected

**Please contact Samantha Dumlalig and submit your bids/material quotes on or before June 16th, 2022, at 3:59pm.**

Webcor Builders is an Equal Opportunity/Affirmative Action Employer.

We are requesting subcontractor and supplier quotes/bids specifically from DBE's including but not limited to MBE/WBEs for the:

**EBMUD – SPEC 2165- Pardee Recreation Area & Pardee Center WTP Improvements Valley Springs, CA**

### PROJECT SCOPE:

#### Pardee Recreation Area WTP:

Remove & Dispose of Existing Ultra-Filtration Skid Module, and Appurtenances. Install new Ultra-Filtration Skid, 2 new backup generators, pumps piping electrical controls and startup.

#### Pardee Recreation Area WTP- Dechlorination System Improvements:

Remove & Dispose of existing Dechlor system. Install new Captor dechlor system, new electrical & Dosing pump controls and communication to scada.

#### Pardee Center WTP:

Remove & Dispose of existing Nano-filtration skid and Appurtenances. Install new Nano-filtration skid and associated appurtenances controls start-up and calibration of new system.

We are requesting bids for the following trades and/or material suppliers: Site Demolition, Piping & Valves, I&C, Metal Fabrications, Temporary Bypass Piping, Painting & Industrial Coatings, Electrical.

Let us know if you need work items separated into smaller tasks or quantities to allow your participation. We will accommodate requests whenever possible and when economically feasible.

Plans may be viewed at our office or your local Builders Exchange. Plans are also available directly from the Owner EBMUD hard copy or on EBMUD's website. EBMUD's website is:

<https://construction-bids.ebmud.com/CurrentorFutureBid.aspx?BidMode=Current>

100% Payment and Performance Bonds are required. Insurance will be required. Please contact us with any questions. We will provide assistance with bond and insurance requirements.

We are an Equal Opportunity Contractor.

Please respond by phone or fax if you are interested in bidding on this project.

Garney Pacific, Inc. is signatory to Laborers & Operators unions.



# CALIFORNIA SUB-BID REQUEST ADS

Sub-Bids Requested from qualified **MBE/WBE/SBE/DVBE** Subcontractors and Suppliers for:

## PIPELINE 5 RELINING, NORTH TWIN OAKS VALLEY ROAD TO CROSSOVER PIPELINE TURNOUT, SPECIFICATION 669

**Owner: San Diego County Water Authority**

**Location: San Marcos, CA**

**Bid Date: June 28, 2022 @ 2:00 P.M.**



667 Brea Canyon Road, Suite 30 • Walnut, CA 91789

Phone: (909) 595-4397, Fax: (909) 444-4268

Contact: Lori Olivas, [lori.olivas@jfshea.com](mailto:lori.olivas@jfshea.com)

J.F. Shea Construction, Inc. is soliciting your participation in the preparation of this bid. We are particularly interested in bids from subcontractors/suppliers for the following work items: SWPPP, Dewatering, Lead & Asbestos Abatement, Fencing, Hydroseeding/Revegetation, Aggregate Base, Grouting, Ready-Mix Concrete, Reinforcing Steel, Structural Steel, Miscellaneous Metals, Painting & Coatings, Cathodic Protection

**Plans and Specifications:** Contract Documents can be downloaded via The Network or Ebidboard through the Water Authority's Contracting Opportunities page at <http://www.sdcwa.org/contracting-opportunities>. Plans may also be viewed at our Walnut Office. J.F. Shea Construction, Inc. is an equal opportunity employer and intends to negotiate in good faith with interested MBE/WBE/SBE/DVBE firms and intends to utilize the lowest responsive bidder. J.F. Shea expects potential subcontractors to be bondable. J.F. Shea will pay for up to 1% for subcontractor bond costs. Subcontractors and Suppliers are expected to bid per plans and specifications, including requirements for warranties. Standard manufacturer's warranties, if not in conformance with owner's specifications, will not be accepted.



An Equal Opportunity Employer is requesting quotations from all qualified Professional services, sub-contractors, material suppliers and trucking including certified **DBE/SBE** for the following project:

**UC Berkeley**

**DM Centennial Bridge Improvements - Project No. 12703A**

**Replace the existing Centennial Drive Bridge Overpass above Lawrence Road with a new 3-span viaduct by shifting the roadway to the south so that the existing bridge and roadway can remain in service during construction.**

**Bid Date: June 29, 2022, at 2:00 PM**

**\*\*Bidding Electronically. Quotes need to be received by 11:00am on bid day\*\***

**CONTACT:**

**Debby Pannell**

Brosamer & Wall Inc.

1777 Oakland Blvd, Suite 300, Walnut Creek, California 94596

PH: 925-932-7900 • FAX: 925-279-2269

**PROJECT SCOPE:**

Brosamer & Wall Inc., is requesting quotes from all qualified subcontractors, suppliers, and truckers including certified DBEs on all items of work type listed below, including but not limited to:

SWPPP; Construction Survey; Temporary Shoring; Erosion Control; Demolition; Clear & Grub; Roadway Excavation including Offhaul & Disposal; Subgrade Preparation (Scarify, Recompact); Road Improvements (East Abutment); Materials (HMA; AC Dike; Aggregate Base; Class 2 Perm; Structure Backfill [Bridge & Retaining Wall]; Rock Slope Protection); Fencing; Roadside Signs; Landscaping; Guardrail; Minor Concrete; Railing; Striping/Pavement Markings; Alternative In-Line Terminal System; Vegetate Swale; Reinforced Concrete Pipe; Electrical; Frame & Grates; Manhole; Underdrain Pipes; Underdrain Cleanout; Structure Excavation (Bridge & Retaining Wall); Permanent Steel Casing; Cast-in-Drilled-Hole Concrete Piling; Prestressing Cast-in-Place Concrete; Structural Concrete (Bridge Footing, Bridge, Approach Slab, Retaining Wall & Barrier Slab); Bar Reinforcing Steel (Bridge & Retaining Wall); Misc. Metal (Bridge); Chain Link Railing; Concrete Barrier (Type 842); Mechanically Stabilized Embankment

Please Contact Brosamer & Wall Inc. at the email listed below for the complete list of the Actual Available Project Bid Items.

**Requirements:** Brosamer & Wall, Inc. will work with interested subcontractors/suppliers to identify opportunities to break down items into economically feasible packages to facilitate DBE. Brosamer & Wall, Inc. is a union signatory contractor. Subcontractors must possess a current contractor's license, insurance coverage, valid DBE certification, DIR (Department of Industrial Relations) registration number for public work projects, and worker's compensation for the entire length of the contract. All subcontractors will be required to sign our standard Subcontract Agreement. 100% payment and performance bonds may be required. If you have any questions regarding this project or need assistance in obtaining/waiving insurance, bonding, equipment, materials and/or supplies please call or email Debby Pannell contact information below.

Plans and specifications can be viewed at our office located at 1777 Oakland Blvd Suite 300, Walnut Creek, Ca. 94596. B&W will also make plans & specs available electronically. Please email Debby Pannell at [dpannell@brosamerwall.com](mailto:dpannell@brosamerwall.com) for free online link. Brosamer & Wall Inc. intends to work cooperatively with all qualified firms seeking work on this project. **\*\*Submit ALL Bid/Quotes via email to [estimating@brosamerwall.com](mailto:estimating@brosamerwall.com) or via fax at 925-279-2269 along with a copy of your CURRENT DBE/SBE CERTIFICATION by 11am on bid day. Please include your CSLB License Number & DIR Registration Number on all bid/quotes.** Subcontractors, Dealers/Suppliers and Brokers please provide your designation code to us on or before June 29, 2022.

B&W, INC., IS AN EQUAL OPPORTUNITY EMPLOYER.

## J.R. Filanc Construction Company, Inc. (AN EQUAL OPPORTUNITY EMPLOYER)

NOTICE INVITING BIDS: Orange County Water District  
– Fullerton Main Plant PFAS  
Water Treatment Plant

LOCATION OF WORK:

627 La Palma Avenue, Anaheim, CA 92801

SCOPE OF WORK: The Fullerton Main Plant PFAS  
Water Treatment Plant project generally  
consists of the following major components.

**BID DUE DATE: 2:00 PM - June 21, 2022**

1. Furnish Dual Media Pressure Vessel systems at the Water Treatment Plant including pressure testing, disinfection, and bacteria testing.
2. Furnish Granular Activated Carbon (GAC) system media into dual media pressure vessels.
3. Furnish and install a backwash system for the Granular Activated Carbon (GAC) system.
4. Rehabilitation (redevelopment) of City water supply well number 3A.
5. Furnish and install a new well pump and motor.
6. Structural concrete at the Fullerton Main Plant site for the PFAS Water Treatment Plant.
7. Furnish and install epoxy lined and coated above ground piping and epoxy lined and cement mortar coated (CMC) buried pipelines to the Granular Activated Carbon (GAC) system. Install epoxy lined and coated above ground piping and epoxy lined and cement mortar coated (CMC) buried pipeline from the GAC system to the connection to the distribution system.
8. Paving and Site Improvements: Grading, Asphalt Paving, and drainage at the new water treatment plant.
9. Exterior Wall, gate, landscaping, and irrigation.
10. Electrical and Instrumentation: Instrumentation and control systems shall be coordinated with the City's Controls Integrator.

**Filanc** is accepting quotes for the following scopes: SWPPP, Survey, Aggregates, Demolition, Paving, Curbs & Gutter, Rebar, Metals, Coatings, Process Equipment, Pipe, Valves, Pipe Supports, Electrical and Instrumentation.

**Filanc** intends to seriously negotiate with qualified SBE/MBE/WBE for project participation, and will assist with obtaining necessary equipment, supplies, materials, bonding, credit lines, and insurance if needed.

Plans and specifications can be obtained at no cost by contacting Adriana Iglesias at: [Alglesias@Filanc.com](mailto:Alglesias@Filanc.com) or 760-941-7130.

It is the policy of **Filanc** to encourage equal opportunity in its construction, consultant, material and supply contracts. Bids/proposals from small businesses, minority-owned, disabled, veteran-owned businesses, women-owned businesses are strongly encouraged. **Filanc** encourages larger contracts to subcontract with smaller DBE's and encourages contracting with a group of DBE's when the contract is too large for one firm.

**Filanc** is committed to equal opportunity and will not discriminate with regard to race, religion, color, ancestry, age, gender, disability, medical condition or place of birth and will not do business with any firm that discriminates on any basis.



# CALIFORNIA SUB-BID REQUEST ADS

## SKANSKA

Subcontractor/Supplier Bids/Proposals Requested  
Owner: California Department of Transportation  
Caltrans Contract Number: 07-316004

**Revised Proposal Due Date: August 4, 2022 – 2:00 PM**  
DBE – 23%

Skanska USA Civil West California District Inc. is interested in soliciting in Good Faith all subcontractors and suppliers as well as certified DBE subcontractors and suppliers related to the scopes of work below for the

### CONSTRUCTION ON STATE HIGHWAY 14 IN LOS ANGELES COUNTY IN PALMDALE AND LANCASTER FROM TECHNOLOGY DRIVE UNDERCROSSING TO AVENUE "A" OVERCROSSING

Plans & Specs can be accessed and download online at:  
Caltrans Office of Engineer [dot.ca.gov/des/oe/weekly-ads](http://dot.ca.gov/des/oe/weekly-ads)

Requested scopes include, but are not limited to the following and should be based on the Contract and its amendments:

Construction Area Signs, Traffic Control, Striping, PCMS Boards, Temporary Railing (Type K), Implement BMP's, SWPPP, Erosion Control, Street Sweeping, Clear and Grub, Roadway Excavation, Roadway Excavation (ADL), Class 3 Aggregate Base, Hot Mix Asphalt, Place HMA Dike, Tack Coat, Remove AC Dike, Cold Plane Asphalt Concrete Pavement, Joint Seal, Remove Concrete Pavement and Base, Minor Concrete, Paving Notch Extension, Rock Slope Protection, Pre/Post Construction Surveys, Miscellaneous Iron And Steel, Guardrail Systems, Roadside Signs, Rumble Strip, 6" Rumble Strip (asphalt concrete pavement), Electrical Systems, Structural Signs, Grind Existing Concrete Pavement, Structural Concrete Approach Slab, Concrete Aggregates, Cement, Fly Ash, Admixtures, Tie Bars, Dowel Bars, RSC Aggregate and Cementitious Materials, Trucking, Quality Control, and Water trucks.

**Requirements:** Skanska is an Equal Opportunity Employer and is requesting quotes from all qualified subcontractors and suppliers. Skanska will assist qualified subcontractors and suppliers in obtaining bonding, lines of credit, insurance, necessary equipment, materials and/or supplies. If you are a DBE Company, please provide your certification letter with your proposal. If you are a non-DBE, please indicate all lower-tier participation on your quotation as it will be evaluated with your price. In order to assist DBE subcontractors and suppliers, we will divide total requirements into smaller packages, tasks or quantities and establish delivery and construction schedules which will permit maximum participation when feasible. Subcontracting Requirements: Skanska's insurance requirements are Commercial General Liability (GL): \$1M ea. occ., \$1M personal injury, \$2M products and completed operations agg. and general agg.; \$1M Auto Liability; \$5M Excess/Umbrella and \$1M Workers Comp. Endorsements and waivers required are the Additional Insured End., Primary Wording End., and a Waiver of Subrogation (GL & WC). Other insurance requirements may be necessary per the scope or RFP requirement. Subcontractors may be required to furnish performance and payment bonds in the full amount of their subcontract by an admitted surety and subject to approval by Skanska. Quotations must be valid for the same duration as specified by the Owner for contract award. Conditions or exceptions in Subcontractor's quote are expressly rejected unless accepted in writing. Skanska is signatory to the Operating Engineers, Laborers, Cement Masons, and Carpenters Unions. Subcontractors must provide weekly, one original and one copy of all certified payrolls, including non-performance and fringe benefit statements if required by law or by the Prime Contract. Please note that all Contractors and Subcontractors must register with the DIR (Department of Industrial Relations) in order to bid on public works projects. Include CSLB License Number and DIR Number on All Quotes Submitted.

Skanska USA Civil West California District is an Equal Opportunity/Affirmative Action Employer  
EEO/AA/Vet/Disability Employer

Estimating Department: 1995 Agua Mansa Rd, Riverside, CA 92509

Phone: (951) 684-5360, Fax: (951) 788-2449

Lead Estimator: Joe Sidor Email: [bids.social@skanska.com](mailto:bids.social@skanska.com)

## ANVIL BUILDERS INC.

1475 Donner Ave. San Francisco, CA 94124  
Phone: 415-285-5000 • Fax: 415-285-5005

### Request for LBE's Subcontractors and Suppliers for

**Project: As-Needed Construction Services for Airport Pavement and Drainage Improvements**  
Contract No: 11786.50

**Bid Date: Wednesday, June 15, 2022 • Bid Time: 2:00 PM**

The intent of this Contract is to provide the City with as-needed services through an on-call contractor for the duration of three (3) years to address repair and maintenance work that is beyond the immediate capabilities of the Airport Maintenance staff. The Scope involves rubber removal, storm drainage improvements, and pavement reconstruction and overlays in areas throughout the airfield operations area including runways, taxiways, aprons, and in-field areas inside and outside the runway/taxiway safety areas and object free areas.

Seeking all trades (but not limited to): Concrete, Rebar, Pipeline, Excavation, Asphalt Paving, Demolition, Sawcutting, Grading, Painting and Coating, Runway Rubber Removal, and other required work and trades.

Plans, specifications, and requirements can be viewed at our office or by using the link below.

<http://flysfo.com/construction>

For assistance with bonding, lines of credit, insurance, or anything else regarding bidding on this project, contact Anvil Builders via phone or email.

Will you be bidding this project? Please email or fax your response to  
[estimating@anvilbuilders.com](mailto:estimating@anvilbuilders.com) / 415-285-5005.

## SKANSKA

Subcontractor/Supplier Bids/Proposals Requested  
Owner: California Department of Transportation  
Caltrans Contract Number: 07-339604

**Proposal Due Date: June 15, 2022 – 2:00 PM**  
DBE – 26%

Skanska USA Civil West California District Inc. is interested in soliciting in Good Faith all subcontractors and suppliers as well as certified DBE subcontractors and suppliers related to the scopes of work below for the

**Construction on State Highway 14  
in Santa Clarita in Los Angeles County**  
Plans & Specs can be accessed and download  
online at:

Caltrans Office of Engineer  
[dot.ca.gov/des/oe/weekly-ads](http://dot.ca.gov/des/oe/weekly-ads)

Requested scopes include, but are not limited to the following and should be based on the Contract and its amendments:

Construction Area Signs, Traffic Control, Striping, PCMS Boards, Temporary Barrier System, Implement BMP's, SWPPP, Erosion Control, Street Sweeping, Clear and Grub, Roadway Excavation, Roadway Excavation (TPH), Hot Mix Asphalt, Place HMA Dike, Remove AC Dike, Minor Concrete, Rock Slope Protection, Miscellaneous Iron And Steel, Guardrail Systems, Roadside Signs, Trucking, Quality Control, Water trucks, Fence, Storm Drain, Concrete Barrier, Anchored Wire Mesh, and Turf Reinforcement Mat.

**Requirements:** Skanska is an Equal Opportunity Employer and is requesting quotes from all qualified subcontractors and suppliers. Skanska will assist qualified subcontractors and suppliers in obtaining bonding, lines of credit, insurance, necessary equipment, materials and/or supplies. If you are a DBE Company, please provide your certification letter with your proposal. If you are a non-DBE, please indicate all lower-tier participation on your quotation as it will be evaluated with your price. In order to assist DBE subcontractors and suppliers, we will divide total requirements into smaller packages, tasks or quantities and establish delivery and construction schedules which will permit maximum participation when feasible. Subcontracting Requirements: Skanska's insurance requirements are Commercial General Liability (GL): \$1M ea. occ., \$1M personal injury, \$2M products and completed operations agg. and general agg.; \$1M Auto Liability; \$5M Excess/Umbrella and \$1M Workers Comp. Endorsements and waivers required are the Additional Insured End., Primary Wording End., and a Waiver of Subrogation (GL & WC). Other insurance requirements may be necessary per the scope or RFP requirement. Subcontractors may be required to furnish performance and payment bonds in the full amount of their subcontract by an admitted surety and subject to approval by Skanska. Quotations must be valid for the same duration as specified by the Owner for contract award. Conditions or exceptions in Subcontractor's quote are expressly rejected unless accepted in writing. Skanska is signatory to the Operating Engineers, Laborers, Cement Masons, and Carpenters Unions. Subcontractors must provide weekly, one original and one copy of all certified payrolls, including non-performance and fringe benefit statements if required by law or by the Prime Contract. Please note that all Contractors and Subcontractors must register with the DIR (Department of Industrial Relations) in order to bid on public works projects. Include CSLB License Number and DIR Number on All Quotes Submitted.

Skanska USA Civil West California District is an  
Equal Opportunity/Affirmative Action Employer  
EEO/AA/Vet/Disability Employer

Estimating Department:

1995 Agua Mansa Rd, Riverside, CA 92509

Phone: (951) 684-5360

Lead Estimator: Joe Sidor

Email: [bids.social@skanska.com](mailto:bids.social@skanska.com)





# CALIFORNIA SUB-BID REQUEST ADS

## SKANSKA

**Subcontractor/Supplier Bids/Proposals Requested**  
**Owner: San Bernardino County Transportation Authority**  
**IFB No. IFB22-1002780**

**Bid Date: July 6, 2022 – 2:00 pm**

**DBE 13%**

Skanska USA Civil West California District Inc. is interested in soliciting in Good Faith all subcontractors, vendors and Trucking as well as certified DBE firms for this project.

**For Construction Of North 1st Avenue Bridge Over the BNSF Railroad**

Plans and Specifications are available through registering on our plan site at:  
<https://app.buildingconnected.com/public/59b1c0096ab4570007e09292>

Requested scopes include, but are not limited to the following and should be based on the Contract and its amendments:

Site Security, Traffic Control, Signs, Fencing, SWPPP, Concrete Reinforcing, Concrete, Concrete Removal, Saw Cutting, Metal Fabrications, Electrical, Well Points, Dewatering, Clearing and Grubbing, Stripping, Excavation, Riprap, Cold Plane Existing Asphalt Pavement, Aggregate Base Course, Traffic Lines and Markings, Topsoil, HDPE Pipe, Reinforced Concrete Pipe, Geotextile, Revegetation, Weir boxes, Asphalt Paving, Construction Area Signs, Concrete Highway Barriers, Minor Concrete, Shotcrete, Concrete Flatwork, Aggregate Supply, Structures and Bridge Demolition, Drainage, Drilled Shafts, Soil nails, Post Tensioning, Erosion Control, Electrical/Lighting system /ITS, Fencing, Guardrail, Landscape, Milling, Monitoring, Painting, Rebar, Signage, Sign Structures, Staining, Striping, Survey, Traffic Control, Temporary Concrete Barrier, Trucking, Sweeping, Crane Rental, Temporary Shoring, Temporary offices, Temporary K-rail, Pipe Material Supply, Concrete Formwork, Excavation, Earthwork, Quality Control, Expansion Joints.

**Requirements:** Insurance requirements are Commercial General Liability (GL): \$25 ea. occ., \$1M personal injury, \$2M products and completed operations agg. and general agg.; \$5M Auto Liability; \$5M Excess/Umbrella and \$1M Workers Comp. Endorsements and waivers required are the Additional Insured End., Primary Wording End., and a Waiver of Subrogation (GL & WC). Other insurance requirements may be necessary per scope or RFP requirement. Subcontractors may be required to furnish performance and payment bonds in the full amount of their subcontract by an admitted surety and subject to approval by Skanska. Quotations must be valid for the same duration as specified by the Owner for contract award. Conditions or exceptions in Subcontractor's quote are expressly rejected unless accepted in writing. Skanska is signatory to the Operating Engineers, Laborers, Cement Masons, and Carpenters Unions. Subcontractors must provide weekly, one original and one copy of all certified payrolls, including non-performance and fringe benefit statements if required by law or by the Prime Contract. All Contractors and Subcontractors must register with the DIR (Department of Industrial Relations) in order to bid on public works projects. Include CSLB License Number and DIR Number on all quotes submitted.

Skanska USA Civil West California District is an Equal Opportunity/Affirmative Action Employer  
 EEO/AA/Vet/Disability Employer  
 Estimating Department: 1995 Agua Mansa Rd, Riverside, CA 92509  
 Phone: (951) 684-5360  
 Lead Estimator: Sonny Didde • Email: [bids.socal@skanska.com](mailto:bids.socal@skanska.com)

NBC Construction & Engineering INC. as a "GENERAL CONTRACTOR" is requesting proposal on "ALL TRADES" from all subcontractors & suppliers, including DVBE, LBE, DBE, SBE, MBE, WBE firms for the following project:

**PROJECT TITLE: INSTALLATION OF "ALL GENDER RESTROOM" SIGNAGE AT 125 BUILDING SITES**  
**BID NO. : 12193 • BID DATE & TIME: 6/7/2022 @ 2:00PM**  
**PROJECT LOCATION: Various Locations San Francisco, CA**  
**Owner: San Francisco Unified School District**

All Bidders are hereby notified that provisions of the Labor Code of the State of California, regarding prevailing wages shall be applicable to the work performed under this contract. Pursuant to Labor Code Section 1773 the general prevailing wage rates have been determined by the Director of the California Department of Industrial Relations and appear in the California and Federal Prevailing Wage Rates, which can be found at <https://www.dir.ca.gov/OPRL/DPreWageDetermination.htm>. Future effective wage rates which have been predetermined and are on file with the CA DIR are referenced but not printed in such publication.

The Bid and Contract Documents are available during standard working hours (8:00AM-4:30PM) for a non-refundable payment of Twenty Dollars (\$20) per set. Checks are to be made payable ARC NORTHERN CALIFORNIA. Bidder responsible for all shipping and handling fees. Plans are available for viewing at [https://order.e-arc.com/arcEOC/PWELL\\_Main.asp?mem=23](https://order.e-arc.com/arcEOC/PWELL_Main.asp?mem=23). Or please contact NBC Construction & Engineering, Inc.

In addition, if any assistance is needed in obtaining insurance, bonds, or lines of credits, please reach out to NBC Construction & Engineering, Inc. for information.

Please submit proposals to [estimatingnbcinc@gmail.com](mailto:estimatingnbcinc@gmail.com).  
 If email is unavailable, proposal can be faxed to 800-622-9144.  
 For more information, please call Mike Schalchi at 925-322-7473.

## Four Ways 5G Will Transform Construction Worksites

Continued from page 3

worksites and the office for better measurement and tracking, these up-leveled speeds will enable video feeds with artificial intelligence (AI) that help recognize objects, workers and safety issues.

### Delivering low latency

5G will give construction professionals the ability to access reliable information in near real-time with low network latency. The technology's extremely short lag time could be the gateway to remote or autonomous construction operations, where construction businesses can understand what's taking place on worksites quickly and easily perform the work with machines. This will be a huge step forward given the complexities of constantly evolving construction worksite environments.

### Fueling 'Internet of Things' sensors

5G will also have a significant impact on the growth potential of the "Internet of Things," with the capacity for about 1 million sensors per square kilometer—a significant step up from legacy WiFi routers' device limits. Internet of Things describes the network of physical objects—"things"—that are embedded with sensors, software and other technologies for the purpose of connecting and exchanging data with other devices and systems over the internet.

Eventually, jobsites will be able to sensorize virtually anything on a worksite, allowing companies to collect data from tools and materials. For example, workers could put sensors in concrete to assess cure time. Internet of Things sensors can be used for smart buildings, and with 5G, contractors can have a digital twin of that building with data from the very start of the project throughout its life. Internet of Things sensors can also be used for projects such as bridges while they're being constructed, monitoring while they're being moved and installed, tracking when they are complete and then later measuring data such as vibrations. Capturing information from these Internet of Things sensors will make 5G a critical component of a worksite.

### Supporting edge computing

As 5G continues to enable increasing data volumes, not everything will be able to be done in the cloud and will require some of the computing to be done onsite with edge computing and mobile edge computing on 5G networks.

Visit the link below for the full article:

<https://www.constructionexec.com/article/four-ways-5g-will-transform-construction-worksites>